

## Camion 10 Iveco euro cargo euro 6, 12 t Grue 12t/m avec jib ,2.30m

Poids à vide : 7760 KG

Charge utile : 4240 kg

Hauteur du Pont : 1 m

Largeur du pont : 2.30m

Longueur du pont : 4 m

Largueur totale du VHC : 2.30m

Hauteur grue plier : 3.35m

Hauteur cabine : 2.70m

Véhicule idéale pour les accès compliqués et étroit

Longueur totale de véhicule : 6.95m

Calage complet béquille entièrement dehors : 5.30m

Transport avec remorque 3.5t charge totale :  $2.5t + 4.2 = 6.7t$  charge

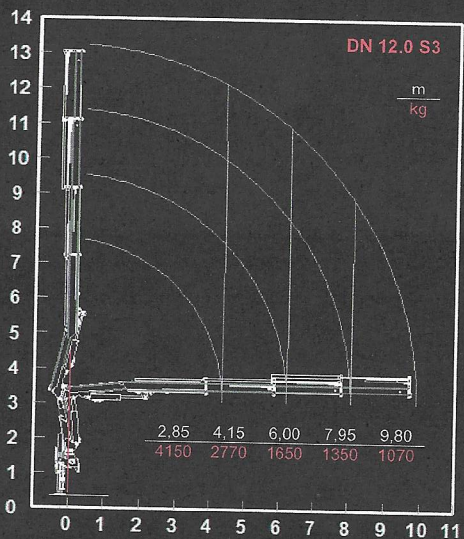
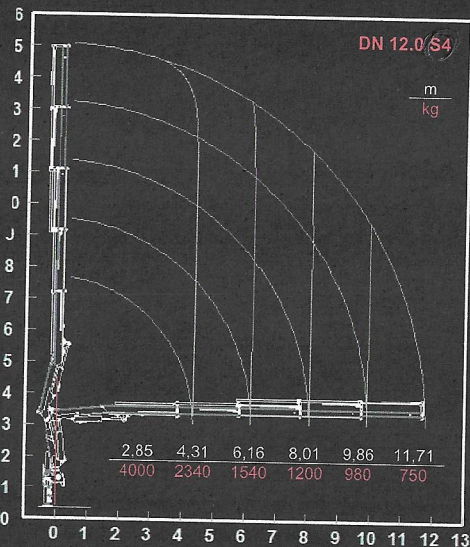
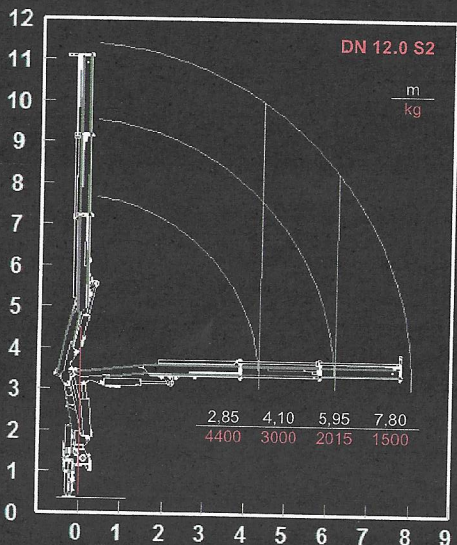
Transport avec remorque 11 t :  $6 t + 4.2t = 10.2t$  charge

Grue ave jib 16m, 350 kg en bout de grue

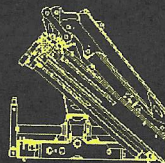
Grue sans jib : 900kg à 10m



LIFTING CAPACITY



DN 12.0



TECNICAL DESCRIPTION

- New concept product, extremely elaborate with advanced design
- 4 hydraulic extensions maximum and manual extensions optional
- Hydraulic extensions of stabilizers (optional)
- 15° negative angle on the second boom
- Special version DNN (DN Next) short boom version increase load capacity
- Fly JIB version for 2 or 3 extensions available
- O-Ring oil joints
- Proportional distributor
- Sandblasted structure and high quality paint finish
- Slewing legs (optional)
- Flange valves on the cylinders
- Anti-corrosion treatment on all pins, joints and pipes
- Steel oil tank
- Additional options:
  - Distributor with 2 extra functions allows Rotor and accessory
  - PLE kit fully mounted and factory tested
  - Remote control
  - Winches



V.D. HYDRAULICS Srl

Z.I. Gerbolina - via E. Tarantelli 10/12  
46019 Viadana (MN)  
ITALIA  
tel. +39 0375 442031  
fax. +39 0375 442032

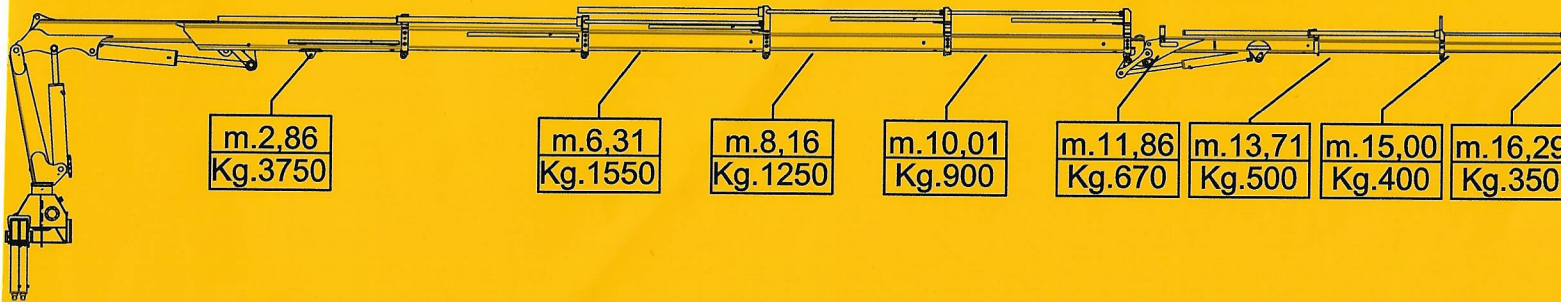
INFO LINE: +39 333 2273773

Authorized Distributor

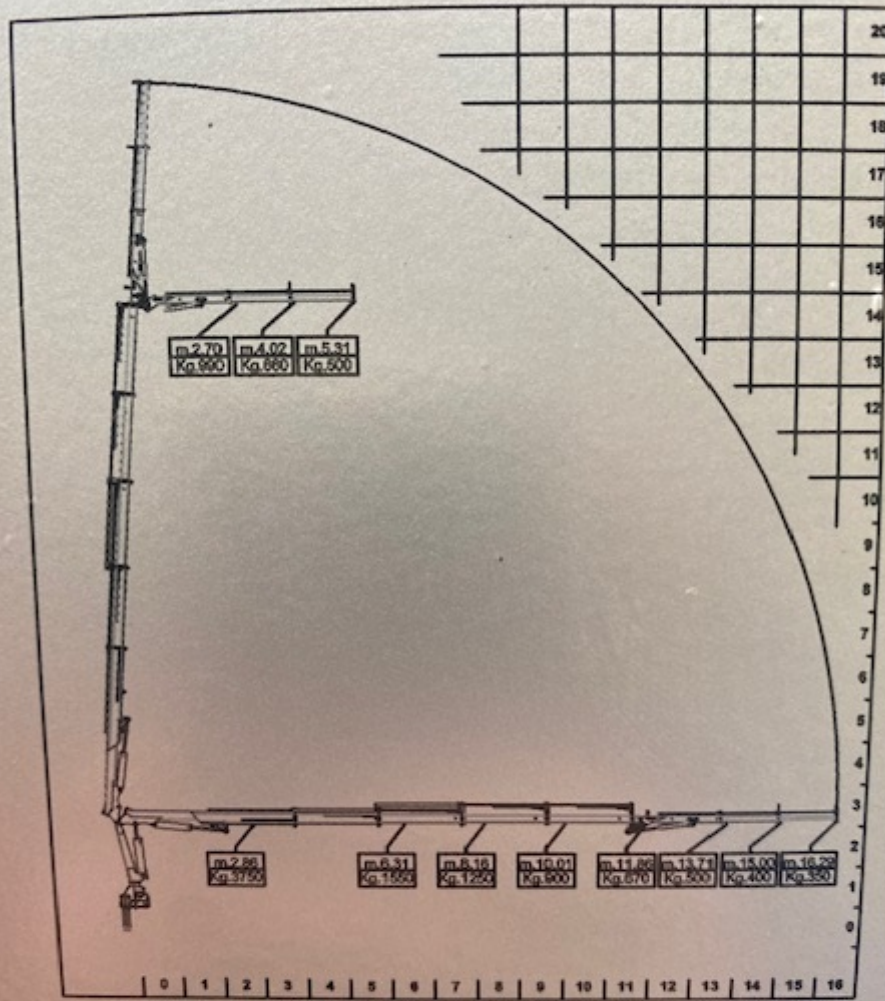
www.dncranes.com  
info@dncranes.com



DN 12.0/S4J



COD. ET00200



COD. ET00199